

4G LTE / DMR Radio

TOKIE not only ensures you the best network access but also protects and future-proofs your communications investment with unmatched network-related benefits.



- Ruggedized Device
- Push-to-talk over WIFI, 2G, 3G, 4G LTE and DMR and Simplex
- 3,600mAh Large Capacity Battery
- Gloves Touch Screen Capable
- Ruggedised Design with IP67 Rating
- Support external speaker, earphone, DMR talking, UART, USB 2.0 & OTG

IP67

size: 119.5 x 61.5 x 23.5 (mm)

TOKIE



Feature	Description
Operating System	TOKIE customize Android 8.1 Oreo
Hardware Platform	MTK6739 Quad-Core A53 1.5GHz 64bit
Network Type	Support 2G, 3G(WCDMA, TD-SCDMA, C2K), 4G(FDD LTE/TDD LTE)
RAM	1GB RAM + 8GB ROM / 2G RAM +16G ROM
Display	Corning® Gorilla® Glass 3, TFT 3.1"IPS, 800 x 480
GPS	GPS, GLONASS & AGPS, dual-mode positioning
WiFi	802.11 a/b/g/n, dual-band
Bluetooth	BT4.0
Sensor	G-Sensor, Proximity Sensor, Light Sensor
USB Interface	Micro USB 2.0, support OTG
SIM Card	Micro-SIM single card
Encoding / Decoding Capabilities	H.264 high profile, 720P 30FPS
Speaker	36mm ϕ 2.0W @ 90dB
Microphone	Sensitivity -42dB
Rear Camera	8 million pixels camera
Front Camera	2 million pixels camera
Video Quality	Support 720P video recording
Indicator LED	Single 3-colors LED
M6	Support External Speaker, Mic, Earphone, DMR Talking, UART
Working Environment	Temperature -20 °C - 60 °C, humidity 20% - 90%
Degree of Protection	IP67, water & dust resistance, anti-drop 1.5 meters
Weight	210g, with battery
Battery Capacity	3,600mAh, replaceable
Duty Cycle Time	About 12 hours (5-5-90)
Size	119.5mm x 61.5mm x 23.5mm

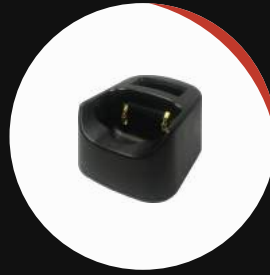
Feature	Description
Frequency Range	VHF 136 ~ 174 MHz / UHF 400 ~ 480 MHz (Optional)
Frequency Stability	± 0.5ppm
Number of Channels	16 (Analog/Digital)
Channel Spacing	12.5KHZ / 25KHZ (Analog), 12.5KHZ (Digital)
Vocoder	AMBE3000, WT3000, AMBE1000, SELP, AVDS
MIL-STD	MIL-STD 810D and E
Audio Distortion	Less than 10%
Audio Power	2 Watt
DMR	TIER 1 & TIER 2
Transmitting Power	Low: 0.5W, High: 2W
Antenna Impedance	50Ω
Sensitivity	0.22 mV (Typical)
DMR Antenna Type	External glue rod antenna
Support	Direct Mode, TDMA, Frequency Scanning, DTMF(Analog), CTCSS/CDCSS

ACCESSORIES



Handheld Mic

The handheld speaker and microphone enable you to attach anywhere within your reach.



Cradle

Cradle can charge the radio as well as a spare battery simultaneously.



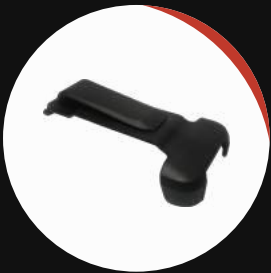
Headset

When you need privacy, the headset with microphone is an option to consider. Also provides noise cancellation in noisy environment.



Radiocam

Record video and take photos during operations even at low light levels. It also comes with speaker and microphone.



Clip

The clip can hold the device and attach to your waist to free your hands. Useful when in use with headset, handheld mic or bodycam.



PTT Button

Useful for drivers as it can stick to the steering wheel or hang from your wrist. Paired over BLE without the need to change the battery frequently.

IRVEES TECHNOLOGY PTE LTD

3B Hamilton Road, Singapore 209176

ask@irvees.com